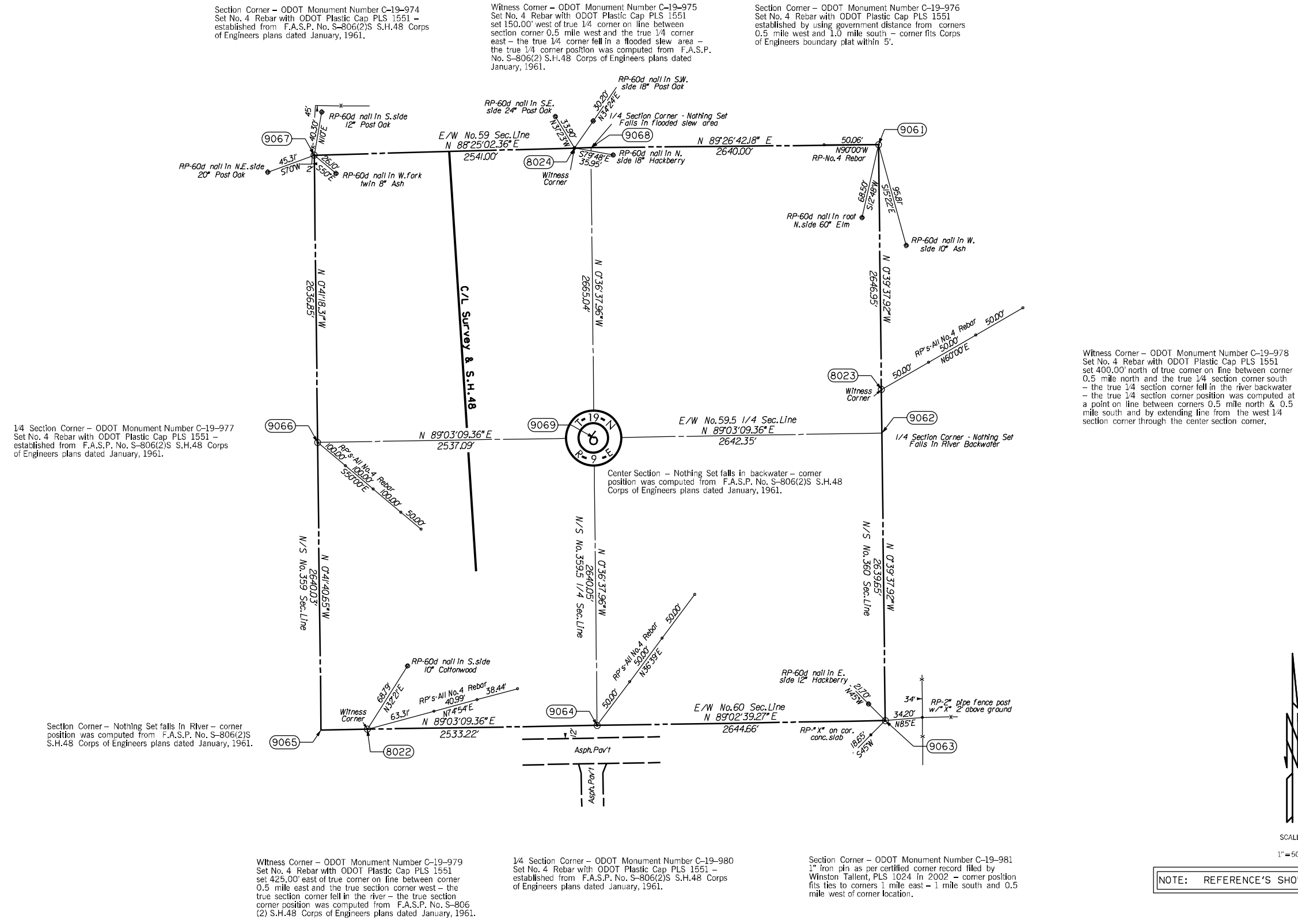


OKLAHOMA DEPARTMENT OF TRANSPORTATION					
FED. ROAD DIST. NO.	STATE	PROJ. NO.	FISCAL YEAR	SHEET NO.	TOTAL SHEETS
	OKLA.				
DESCRIPTION		REVISIONS	DATE		



Section Corner - ODOT Monument Number C-19-974
Set No. 4 Rebar with ODOT Plastic Cap PLS 1551 -
established from F.A.S.P. No. S-806(2)S S.H.48 Corps
of Engineers plans dated January, 1961.

Witness Corner - ODOT Monument Number C-19-975
Set No. 4 Rebar with ODOT Plastic Cap PLS 1551
set 150.00' west of true 1/4 corner on line between
section corner 0.5 mile west and the true 1/4 corner
east - the true 1/4 corner fell in a flooded slew area -
the true 1/4 corner position was computed from F.A.S.P.
No. S-806(2) S.H.48 Corps of Engineers plans dated
January, 1961.

Section Corner - ODOT Monument Number C-19-976
Set No. 4 Rebar with ODOT Plastic Cap PLS 1551
established by using government distance from corners
0.5 mile west and 1.0 mile south - corner fits Corps
of Engineers boundary plat within 5'.

1/4 Section Corner - ODOT Monument Number C-19-977
Set No. 4 Rebar with ODOT Plastic Cap PLS 1551 -
established from F.A.S.P. No. S-806(2)S S.H.48 Corps
of Engineers plans dated January, 1961.

Witness Corner - ODOT Monument Number C-19-978
Set No. 4 Rebar with ODOT Plastic Cap PLS 1551
set 400.00' north of true corner on line between corner
0.5 mile north and the true 1/4 section corner south
- the true 1/4 section corner fell in the river backwater
- the true 1/4 section corner position was computed at
a point on line between corners 0.5 mile north & 0.5
mile south and by extending line from the west 1/4
section corner through the center section corner.

Section Corner - Nothing Set falls in River - corner
position was computed from F.A.S.P. No. S-806(2)S
S.H.48 Corps of Engineers plans dated January, 1961.

Center Section - Nothing Set falls in backwater - corner
position was computed from F.A.S.P. No. S-806(2)S S.H.48
Corps of Engineers plans dated January, 1961.

Witness Corner - ODOT Monument Number C-19-979
Set No. 4 Rebar with ODOT Plastic Cap PLS 1551
set 425.00' east of true corner on line between corner
0.5 mile east and the true section corner west - the
true section corner fell in the river - the true section
corner position was computed from F.A.S.P. No. S-806
(2) S.H.48 Corps of Engineers plans dated January, 1961.

1/4 Section Corner - ODOT Monument Number C-19-980
Set No. 4 Rebar with ODOT Plastic Cap PLS 1551 -
established from F.A.S.P. No. S-806(2)S S.H.48 Corps
of Engineers plans dated January, 1961.

Section Corner - ODOT Monument Number C-19-981
1" iron pin as per certified corner record filed by
Winston Tallent, PLS 1024 in 2002 - corner position
fits ties to corners 1 mile east - 1 mile south and 0.5
mile west of corner location.



NOTE: REFERENCE'S SHOWN ARE NOT TO SCALE.

PLS	DEA	OKLAHOMA DEPARTMENT OF TRANSPORTATION SURVEY DIVISION
DRAWN	DEA	
CHECKED		
APPROVED	LGW	
CREW	Tecumseh	
		SURVEY DATA SHEET
SWO 4994 (1)		PROJECT NO. 27925(04) SHEET NO. 58